

Is it Time to Join or Renew your Membership in the Lovells Township Historical Society?

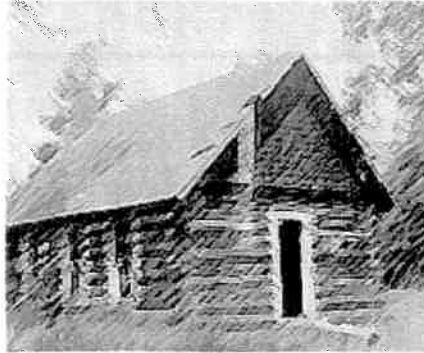
Our funds are used for the care and maintenance of two buildings, acquiring and restoring artifacts and maintaining the *Legends of the North Branch* exhibits.

Adult	\$10.00
Family	\$20.00
Business	\$30.00
Sustaining	\$50.00
Life	\$200.00

Please send us your email address to get the latest news and updates. We do not share your email address.

Please mail your dues to:

Lovells Township Historical Society
8405 Twin Bridge Road
Grayling, MI 49738



The Docent Corner,

This was another successful year for the Museum, there have been visitors every day the museum was open and had several calls making appointments to see the displays. This year there were visitors from as far away as Switzerland, Japan, and England who drove out of their way to visit. One family, who had read Beulah Land, the story of the Kellogg family, came all the way from Arizona to see the school and to purchase their own copy of the Book.

A big Thank You to Larry and Julia Hulka who donated two nice book cases to the School House. They are being used to display the used books that are sold to help fund the Museum. These books are donated to the Lovells Township Historical Society by many of the members. So continue to save your good used books over the winter months so they can be donated in the spring to the Little Book Shoppe. People seem quite pleased to see that the books are for sale and have stopped in again to see if any different books have arrived. The docents continue to accept used books all summer for this sale so the book choices change frequently.

We will close September 30th for the season but will continue to show the museum by appointment. Thanks to all who helped this past season and hope to see you in the Spring. Docents Carol Wolf Britton and Ginger Lyons

Warmest Regards

Carol Wolf Britton