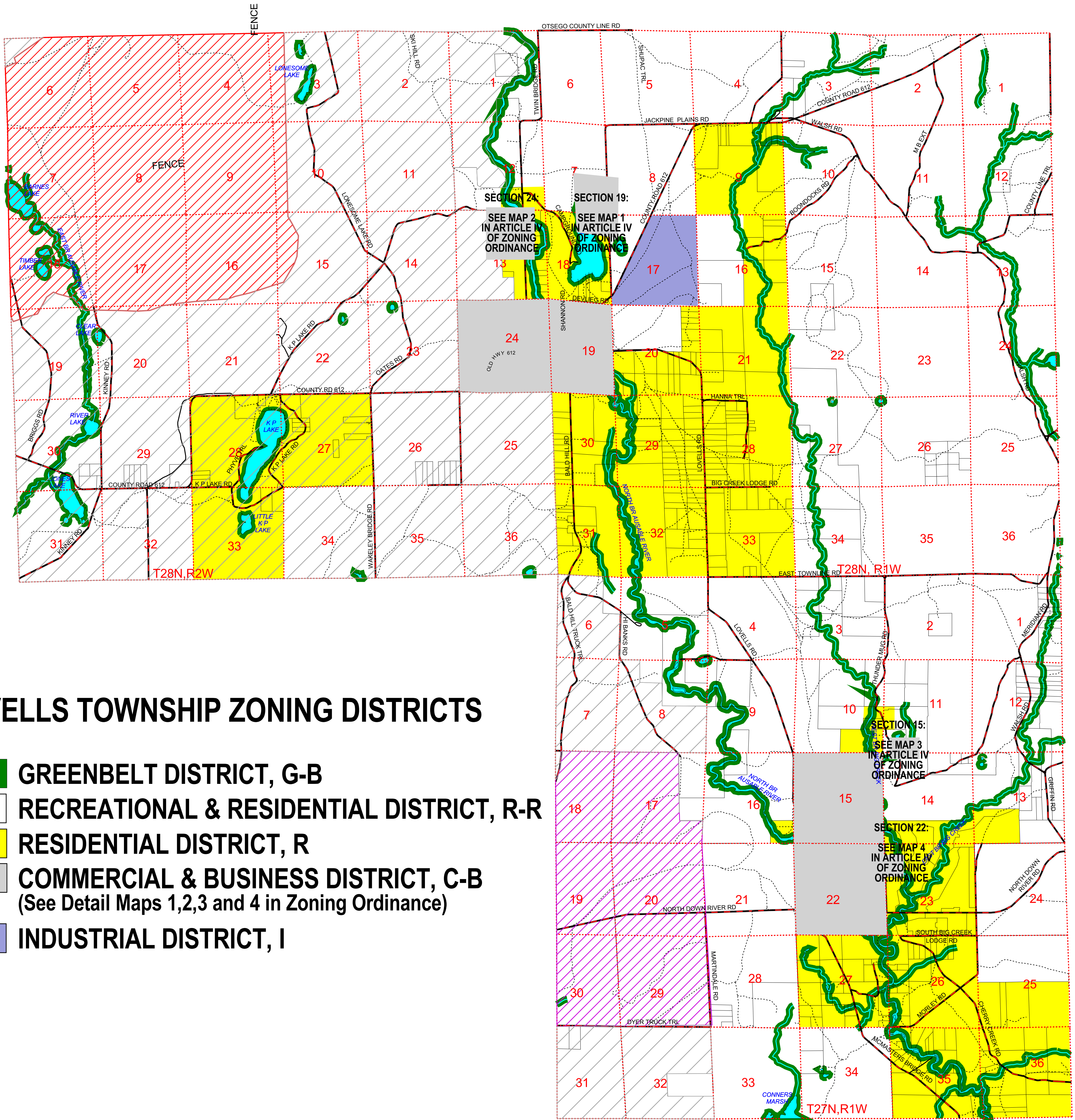


# LOVELLS TOWNSHIP, CRAWFORD COUNTY, MICHIGAN ZONING DISTRICTS



## LOVELLS TOWNSHIP ZONING DISTRICTS

- GREENBELT DISTRICT, G-B
- RECREATIONAL & RESIDENTIAL DISTRICT, R-R
- RESIDENTIAL DISTRICT, R
- COMMERCIAL & BUSINESS DISTRICT, C-B  
(See Detail Maps 1,2,3 and 4 in Zoning Ordinance)
- INDUSTRIAL DISTRICT, I



Sources: Parcel Boundaries Correspond to the 1999 Crawford County Plat Book Published by Farm & Home Publishers & Distributed by the Crawford-Roscommon Conservation District.

Base Map Layers Corresponding to Political and Natural Landscape Features Developed by the MDNR Resource Mapping & Aerial Photography Program.

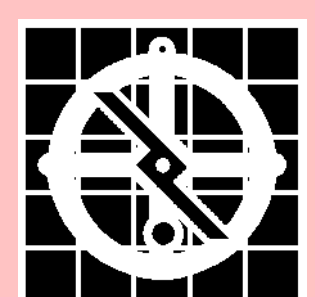
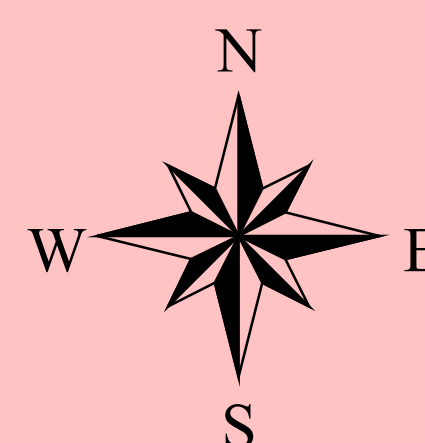
\*\* Note: The parcel boundaries on this map are designed to approximate existing land ownership patterns and should be used for general planning purposes only. Smaller tracts and platted lots are not indicated on this map. Any measurements taken from this map should not be used in lieu of legal survey.

### LEGEND

- NATIONAL GUARD ZONE
- IMPACT AREA
- RESTRICTED AREA
- TOWNSHIP HALL
- PARCEL BOUNDARIES
- ROAD CLASSIFICATION**
- COUNTY PRIMARY
- COUNTY LOCAL
- SECONDARY ROADS
- SECTION LINES
- LAKES & RIVERS
- STREAMS

The Michigan National Guard leases land from the Michigan DNR within the area designated as the National Guard Zone. The Impact Area includes the artillery range where live ordnance is released. The Restricted Area depicted prohibits military activity of any type between the dates of May 1 and September 10. During the remainder of the year, dismantled activities are permitted only with written permission.

The Camp Grayling North Military Installation Map developed by the Defense Mapping Agency was the source used to designate military related activities in the Township. DMA Stock No: V762SCPGRAYLINN  
Military information indicated on this source was current as of 1995.



WADE-TRIM, INC.  
3933 Monitor Road  
Bay City, MI 48706  
1.800.322.4500 / 989.686.3100